



A natural excellence in packaging



THE TINPLATE COMPANY OF INDIA LIMITED
A **TATA** Enterprise

TATA TINPLATE is manufactured by **The Tinfoil Company of India Limited (TCIL)**. Incorporated in 1920, TCIL became the first Company in India to manufacture Tinplate indigenously. Today, the Company continues to uphold its leadership position in the field supplying world-class Tin Mill products to customers both in India and abroad.

TCIL is the largest producer of tinplate in India and 25% of its production is consistently exported to discerning markets worldwide for packaging of a wide variety of fresh and processed foods, beverages, confectionery, fish, dairy products, as well as, for non-food applications like paints, pesticides, lubricants, battery etc.



INTERNATIONAL REACH



OUR OFFERINGS

SINGLE REDUCED (SR) TINPLATE / TFS

Tailor-made within the following ranges:

THICKNESS	0.19 mm to 0.40 mm
WIDTH	700 mm to 1020 mm
CUT LENGTH	500 mm to 1090 mm
TEMPER	T2 / T2.5 / T3 / T4

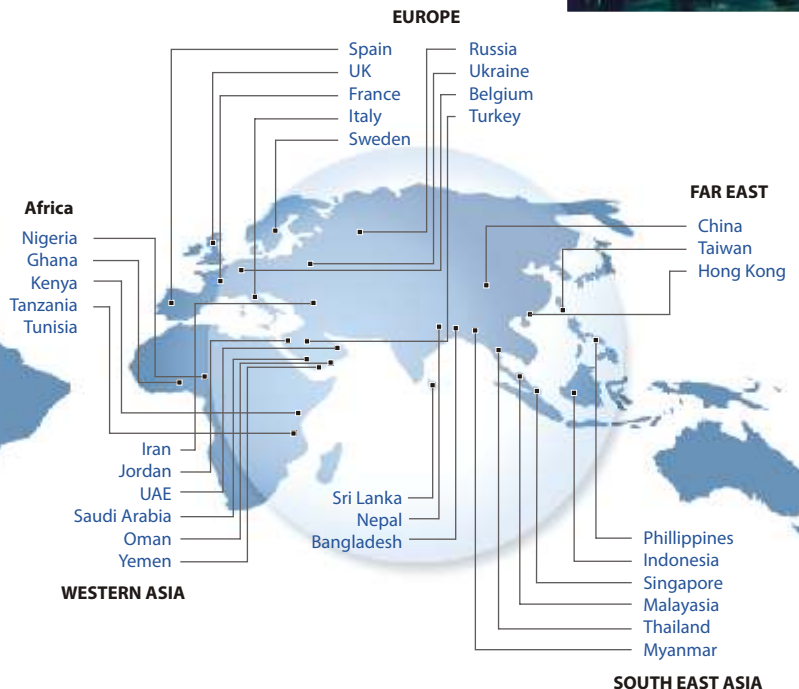
DOUBLE REDUCED (DR) TINPLATE / TFS

Tailor-made within the following ranges:

THICKNESS	0.15 mm to 0.21 mm
WIDTH	700 mm to 900 mm
CUT LENGTH	500 mm to 1090 mm
TEMPER	DR 550 (DR 08) Hardness: 73(+/-3) DR 480 (DR 48) Hardness: 65(+/-3)

LACQUERED & PRINTED TINPLATE

LACQUERED	All grades/coating for food & non-food applications including gold/transparent & other types of lacquers
PRINTED	All types of printing jobs for food cans, paints, pesticides & decorative cans including sizing and varnishing



COATING GRADES

Electrolytic Tinplate from Tata Tinplate is available either equally coated or differentially coated in the following grades.

Type	Coating Code gm/m ²					
Equally Coated	E 0.56/0.56	E 1.12/1.12	E 2.8/2.8	E 5.6/5.6	E 8.4/8.4	E 11.2/11.2
Differentially Coated	D 8.4/5.6	D 11.2/5.6	D 5.6/2.8	D 8.4/2.8	D 11.2/2.8	
TFS Coating	Metallic Chromium: 50 - 140 mg/m ² Chromium in Oxides: 7 - 35 mg/m ²					

Tinplate is available in Stone and Silver finish.

Surface Oil (DOS) Level : 5-12 mg/m²

Passivation : 311 Treatment

TFS is available in Stone and Matt finish.

Surface Oil (DOS) Level : 5-12 mg/m²

Note: Specifications of supplies as per JIS G3303SPTE, EN10202, ASTM 623M

OUR FACILITIES

TCIL's manufacturing facilities include a **Cold Rolling Mill** complex and **two Electrolytic Tinning Lines** - based in Jamshedpur, India. The CRM Complex comprises a 6 Hi CVC Cold Rolling Mill for primary rolling, followed by a 100% High Performance Hydrogen Annealing Furnace of LOI, and 4 Hi Temper / DCR Mill and other related state of art facilities.

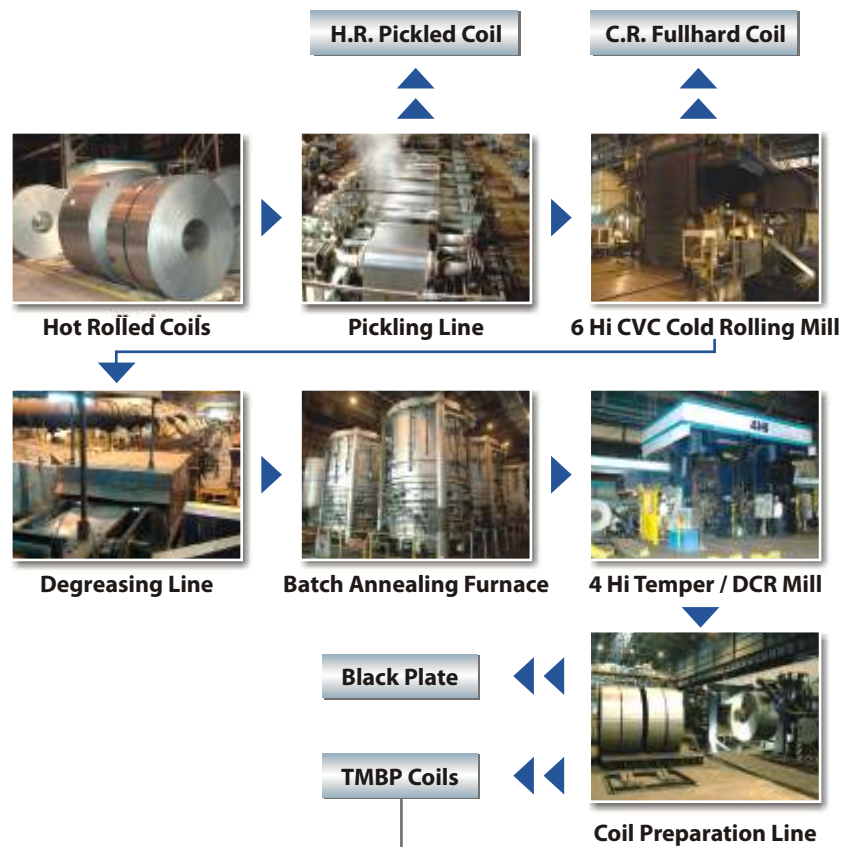
The TMBP coil produced at the CRM Complex is used as raw material for manufacturing superior quality tinplate at the Electrolytic Tinning Line of TCIL.

Very recently, TCIL has commissioned the second state of art Tinning Line with NSEC, Japan, being the technology provider. With the addition of this new Line, the Company will be able to provide ETP/ TFS in Coil form (ID 508 mm) as well as sheets in Straight Cut and Scroll Cut forms, to customers.

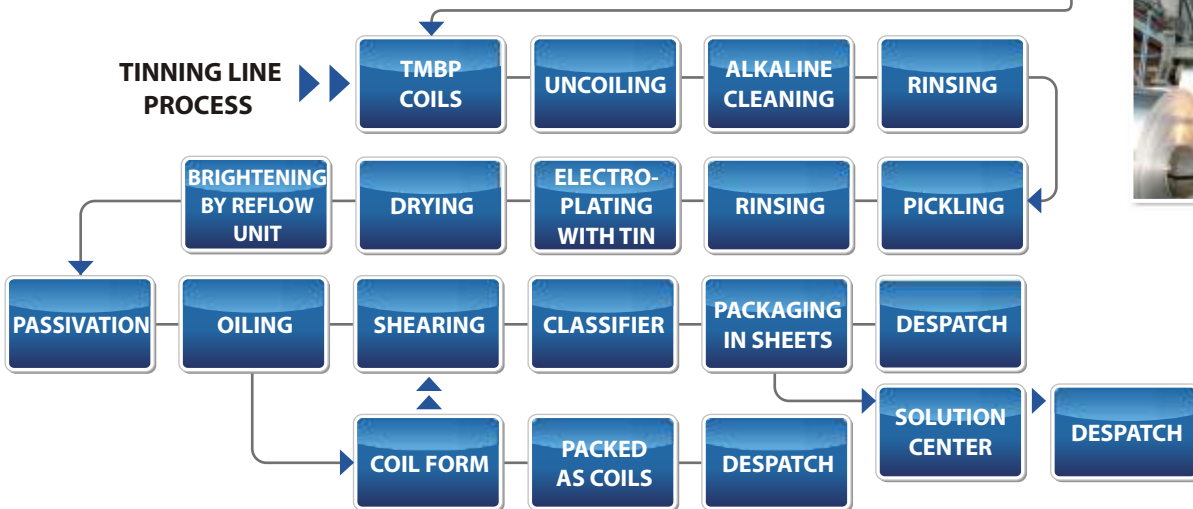
The salient feature of this new line is the 2 step Tin Free Steel manufacturing process which now enables Tata Tinplate to offer world class quality of Tin Free Steel products with coatings in excess of 100mg/m² per side, as per international standards.

To feed this 200,000 MT new facility for producing ETP/TFS, TCIL is now in the process of setting up a second CRM complex. This new facility, expected to be fully operational next year, will make Tata Tinplate fully self-sufficient with assured supplies of Hot Rolled coils from Tata Steel and complete in-house capability to produce tin mill black plate to fully utilise its enhanced capacity.

COLD ROLLING MILL



ELECTROLYTIC TINNING LINE



LACQUERING & PRINTING LINE

In a continuing effort to enhance the value propositions of its products to customers, and to make TATA TINPLATE synonymous with complete solutions in tinplate packaging, TCIL has now started a Solution Centre, which includes a Lacquering and Printing Line, equipped with:

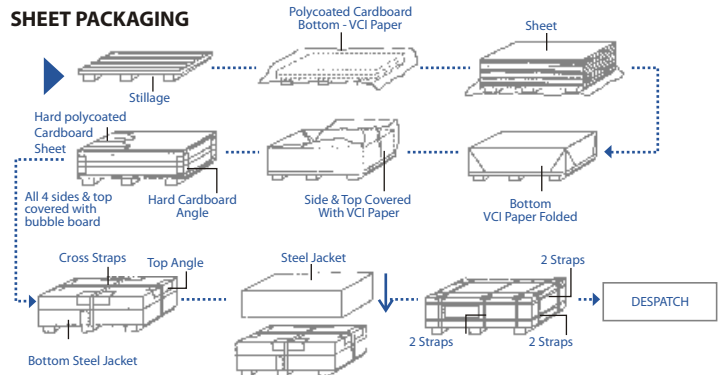
- Crabtree 122 F/FS Lacquering Line
- Crabtree Model 1200/F Inline Coater
- Crabtree 2 Colour Marquess Plus Printing Line



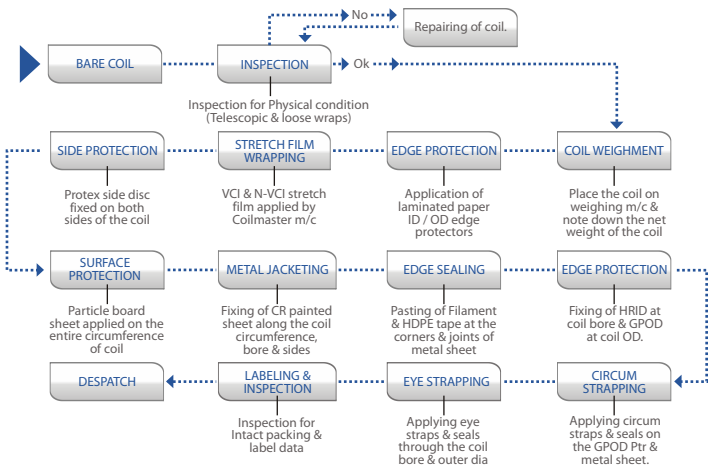
Packaging & Logistics



TATA TINPLATE is exported in sheet and coil form. These are shipped in 20 feet containers from TCIL Works and via Haldia / Kolkata port to different destinations across the globe.



COIL PACKAGING OPERATION SEQUENCE



SHIPMENT	Within 45 days from opening of Letter of Credit
PACKAGING	Export quality, seaworthy covered in metallic envelope on Wooden skids
PACKET WEIGHT	Max 2 MT gross weight per skid

CONTACT US AT :

INDIA THE TINPLATE COMPANY OF INDIA LIMITED,
4 Bankshall Street, Kolkata 700 001, India
Tel 91 33 22435407 / 22435410 / 22318928,
Fax 91 33 22318929, e-mail: export.cell@tatatinplate.com

CHINA TATA SOUTH-EAST ASIA LIMITED
Shanghai Representative Office,
Unit F, 23f Jiushi Fuxing Hansion,
918, Huai Hai Road (M) Shanghai-200020,
Tel 86-21-64159540, Mobile 86-13816807381
Fax 86-21-64159772, e-mail: allan@tatachina.com

SINGAPORE TATA STEEL LIMITED
22 Tanjong Kling Road, Singapore 628048,
Tel 65-62259700, Fax 65-62344561,
Mobile 65-96194644, e-mail: tatas@singnet.com.sg

BANGLADESH TATA STEEL Liason Office,
Bangladesh Dutabash View, Apt. No. E-420,
Dutabash Road, Baridhara, Dhaka-1212, Bangladesh,
Tel 880-2-8812216, Fax 880-2-8812216,
Mobile: 880-189-228248, e-mail: tatabang@citech-bd.com

NEPAL TATA STEEL, P.O. Box 4824,
Heritage Plaza, 4th Floor, Kamladi, Kathmandu, Nepal,
Tel 977-1-4241897 (Direct), Fax 977-1-4247946,
Mobile 977-9851022704, e-mail: tisco@wlink.com.np

SRI LANKA TATA STEEL LIMITED, 53A Ward Place, Colombo 7,
Tel 94112698890/94112698891, Fax 94112698258,
e-mail: tatalanka@wow.lk

UAE TATA WEST ASIA, P.O. Box 16980, Dubai, UAE,
Tel 971-4-883-7721/7750, Fax 971-4-883-7725/7806,
Mobile 971-50-644-9857, e-mail: sai@tatawestasia.ae

SOUTH AFRICA TATA AFRICA HOLDINGS (SA) (PTY) LIMITED,
P.O. Box 86117, City Deep 2049, South Africa,
Tel 27116138344, Fax 27116138368, Mobile 27836471175,
e-mail: tatainsteel@icon.co.za

UK TATA LIMITED, 18, Grosvenor Place, London SW 1X 7HS,
Tel 44-20-7235-8281, Fax 44-20-7838-9733,
Mobile 44-7887563143, e-mail: jhanji@tata.co.uk

USA TATA INCORPORATED, 1250 E, Diehl Road,
Suite 102, Naperville, Illinois 60563-9338,
Tel 630-955-0227, Fax 630-955-0238, Mobile 630-886-1172,
e-mail: rajiv.ranjan@tataincchicago.com



THE TINPLATE COMPANY OF INDIA LIMITED

4 Bankshall Street Kolkata 700 001 India
Tel 91 33 2243 5401 / 5410 Fax 91 33 2230 4170
e-mail: marketing@tatatinplate.com
Visit us at www.tatatinplate.com